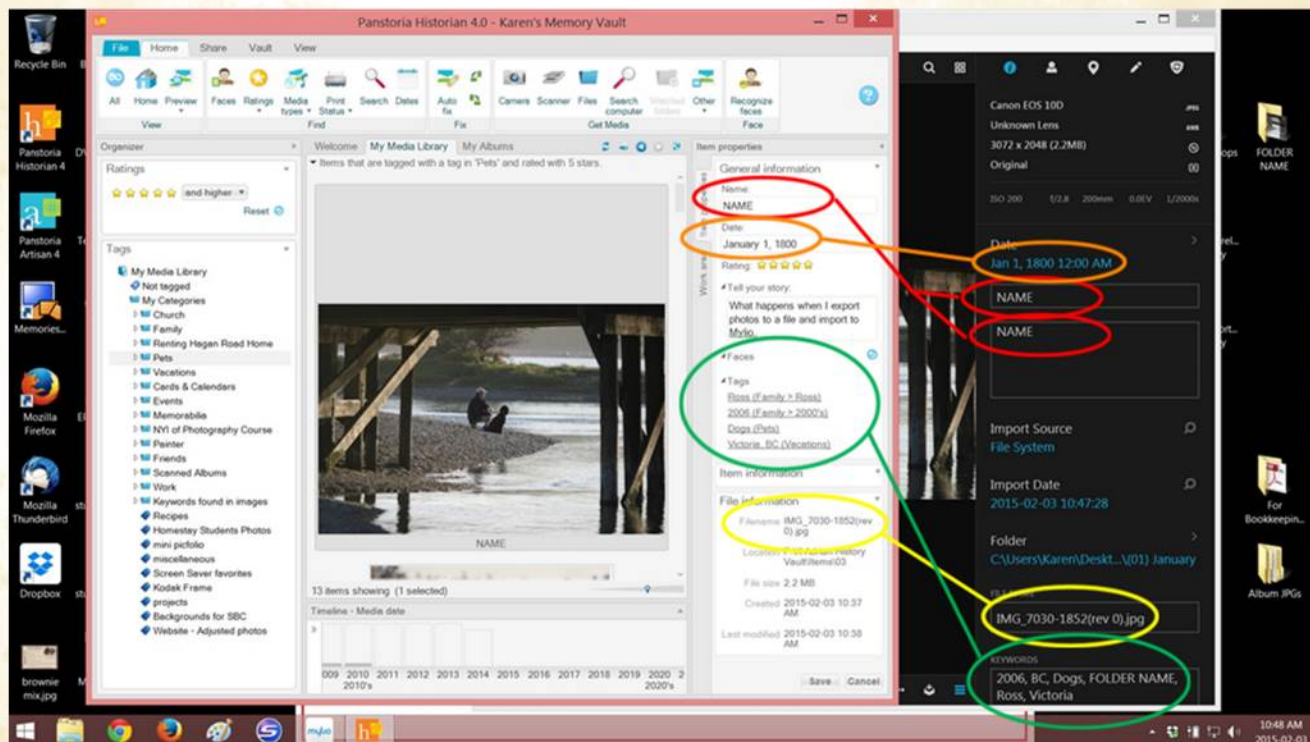


Exporting Photos from Historian to Mylio

Mylio recognizes most of the work that has been done in Panstoria's® Historian.

Before putting those photos into Mylio, you will want to **PLAN** your workflow taking into consideration the end result.

The illustration below shows you where the General Information from Historian will show up in Mylio.



To take photos from Historian over to Mylio is a 2 step process.

1. Export photos from Historian to a folder on your computer
2. Import photos from the folder on your computer to Mylio (Copy or Move Folder)

The most expedient way to export photos from Historian and to **simplify your import** into Mylio is to export the photos in groups. I suggest that you use the Timeline and export by year into annual folders. The benefit of this is:

- Mylio will put that group of photos into a folder with the year label on it and the folder name will become part of the keywords for each image in that group.
- You are working with smaller groups of photos at one time.
- You won't have to deal with messages about duplicates coming from photos that have multiple tags and faces. The original photo has only one copy present in Timeline and all the tags and faces associated with that image.

Panstoria, Artisan, and Historian are trademarks™ or registered® trademarks of Panstoria, LLC. Use of those trademarks does not imply any affiliation with or endorsement by Panstoria. Panstoria, LLC is not affiliated with www.yourphotoorganizers.com, Karen Harmsworth, our products, or our websites. Panstoria does not sponsor or endorse www.yourphotoorganizers.com or any of our products.